

# JPath-GUI24

A Browser-Based Graphical User Interface for BASE24™

*JPath-GUI24 provides a graphical user interface to your existing BASE24™ system, integrating it with the browser-based world of your users. To provide an Internet look & feel, each application screen is intelligently mapped to an easy-to-use GUI form, making JPath-GUI24 an ideal solution for extending BASE24™ access to new users or business partners. To meet specific end-user requirements, JPath-GUI24 allows extending the functionality of the default GUI. Using JPath customization features, you can reflect your corporate ID in the overall GUI look & feel, enhance individual screens, exchange data between screens or with external applications, create macros to streamline BASE24™ operations and much more.*

## Key Features

- Easy installation
- GUI Forms
- Familiar browser-based user interface
- National language support
- APIs for further user customization
- Secure connections across the Internet

## Requirements

### Author Workstation:

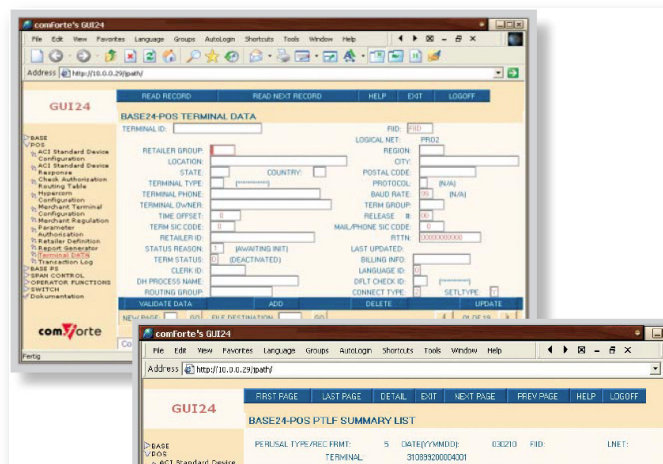
- Windows NT, XP, Vista, 7 or 8
- Linux, Unix
- MacOS

### Client Workstation:

- any standard browser with Java Virtual Machine for Java 1.4 or later
- JPath is also optimized for Java Web Start from Sun Microsystems

### Supported Webserver:

- SWAP (Guardian web server, available on JPath GUI24 download page)
- any standard web server



## Advantages

### Easy Installation

After installation of JPath-GUI24 on your HPE NonStop™ server in conjunction with the web server (available with JPath-GUI24), the applet can be accessed using any Java-aware browser that connects to the server. Downloading JPath-GUI24 from a central location, you save the expense and inconvenience of locally installed software. JPath-GUI24 centralizes maintenance and version control of the software, ensuring that the most up-to-date release is always available.

## Advantages

### National Language Support

JPath-GUI24 supports ISO8859 8-bit Java-enabled language mapping. Drop-down windows automatically display in the user's native language. Also, user messages can be tailored to any user language supporting the Java locale. Your users have the ability to present host screen text in the user's own language and style without reengineering the host-based screens.

### Secure web-server-based BASE24 Access

JPath-GUI24 optionally ensures the confidentiality of transmissions and allows you to protect your sensitive business information. All connections are secured via the most widely used and accepted security protocol SSL (Secure Sockets Layer) now standardized by the IETF as Transport Layer Security (TLS). Both SSL 3.0 and TLS 1.0 are supported, along with strong ciphers, such as 168-bit triple DES and up to 2048-bit public key cryptography. JPath-GUI24 is able to interact with the Secure Web and Proxy Server (SWAP) designed by comForte for HP NonStop Guardian, with HP iTP Web Server, and with any standard secure server on IBM and other systems.

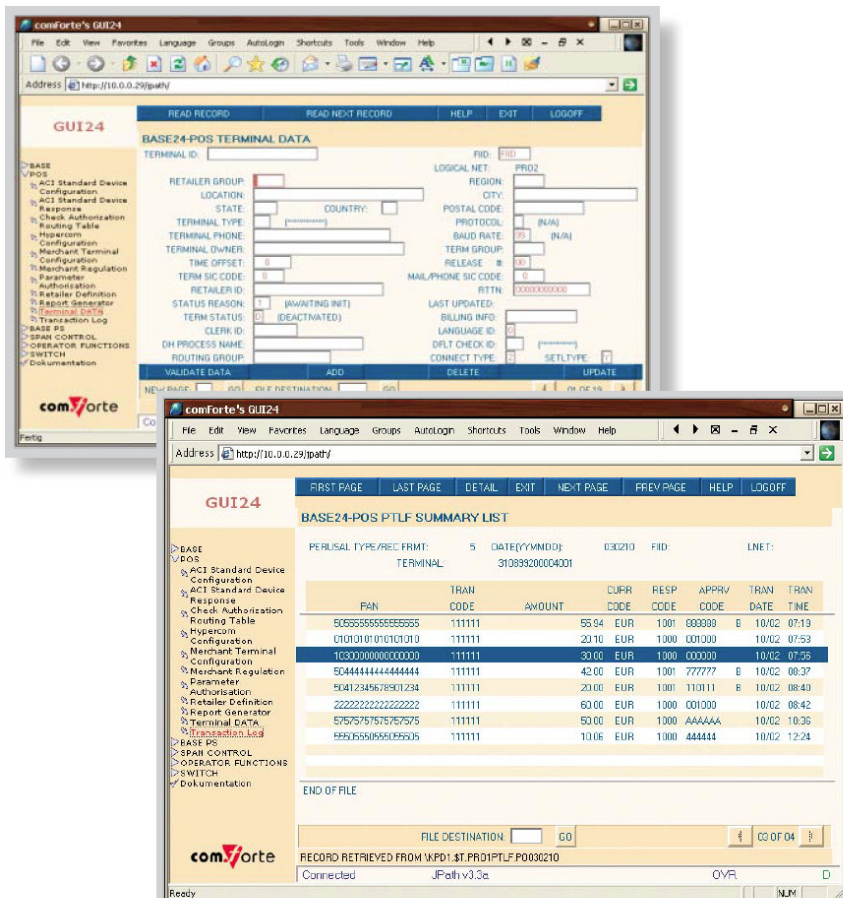
comforte 21 GmbH, Germany  
phone +49 (0) 611 93199-00  
sales@comforte.com

comforte, Inc., USA  
phone +1-303 256 6257  
ussales@comforte.com

comforte Asia Pte. Ltd., Singapore  
phone +65 6818 9725  
asiasales@comforte.com

comforte Pty Ltd, Australia  
phone +61 2 8197 0272  
aussales@comforte.com

[www.comforte.com](http://www.comforte.com)



For distribution partners in your region visit comforte's homepage [www.comforte.com](http://www.comforte.com)